



LIVESTOCK HANDLING EQUIPMENT





LIVESTOCK HANDLING EQUIPMENT

**QUALITY,
INNOVATION,
SAFETY
AND VALUE**

HiQual has incorporated quality, innovation, safety and value into our extensive line of livestock and equine products.

To learn more about these fine products, visit us at www.hiqualequipment.com.



1-844-5HI-QUAL
(1-844-544-7825)



196 1/2 E. 6th Street
Sioux Falls, SD 57104



www.hiqualequipment.com



info@hiqualequipment.com



**LIVESTOCK
HANDLING EQUIPMENT**

1-844-5HI-QUAL



VISIT US ONLINE AT WWW.HIQUALEQUIPMENT.COM

All specifications are subject to change without notice.



PAGES 4-5
Classic Working System



PAGE 6
Hydraulic Squeeze Chute



PAGE 7
XL Hydraulic Squeeze Chute



PAGE 8-9
Heavy & General Duty Gates



PAGE 10
Super Six & Cattleman's Gate



PAGE 11
Combo Gate Gate Latches



PAGE 12-13
Continuous Fence



PAGES 14
Heavy Duty Panels



PAGE 15
Heavy Duty Frame Gates



PAGE 16
Range Panels



PAGE 17
Flex Panels



PAGE 18
Round Pens



PAGE 19
Feed Thru Panels



PAGE 20
Tombstone Saver Feeder



PAGE 21
Tombstone Bull Feeder



PAGE 22
Grain/Silage Bunks



PAGES 23
Classic Calving Pen



PAGE 24
Hydraulic Calf Chute



PAGE 25
Ground & Fence Line Feeders



PAGE 26
Original Stalls



PAGE 27
Traditional Stalls Tilt Out Feeder



CLASSIC WORKING SYSTEM

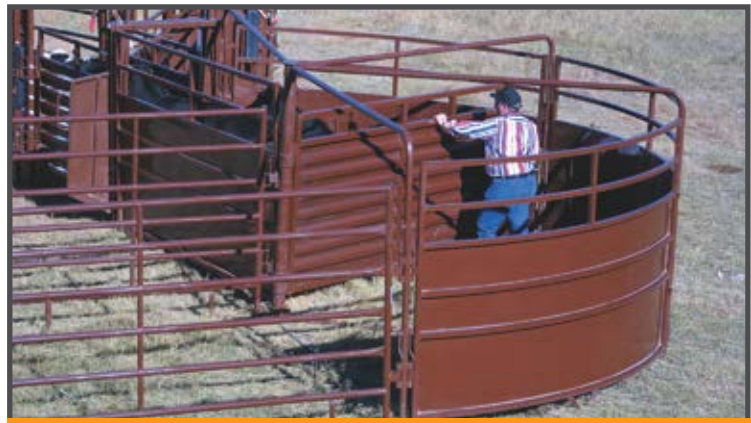
TESTIMONIAL: "I purchased a HiQual Classic Working System... to replace our old wooden facility. I've found the Classic System to be much stronger, safer, and more efficient than our old system. We set-up our system in an "S" curve and the cattle flow really well and we can process our cattle in a third of the time. Overall it has been a very good investment." **Ross Engraf, Hettinger, ND**

The *Classic Working System* is designed for the heavy use of modern feedlot applications, yet is priced for the traditional cow/calf operator. This was accomplished with new and innovative design techniques and production processes. While we didn't reinvent the wheel, we certainly made it better.

Today's livestock industry not only demands quality, but versatility as well. The flexibility of the *Classic Working System* meets all of these demands. With the ability to go from a left to right curve or even into an "S" shape, the HiQual system can fit almost any scenario.

Another critical criteria is the need for efficiency and reduced labor. The HiQual system was designed to get the most work done, with the least amount of labor. Cattle flow is improved when noise is reduced and this is accomplished with silicone sealant under the sheet metal and rubber bumpers between moving parts.

CROWDING TUB



Crowding Tub Features

- 20' Diameter for high capacity and increased productivity.
- Universal Latch on Crowd Gate locks in any position for much improved operator safety.
- Universal Latch is rubber coated for quiet operation and improved cattle flow.
- Crowd Tub is reversible for left or right hand operation.
- Mud legs keep panels above ground and reduce rusting.
- Crowd Gate uses corrugated steel to increase strength and reduce noise.
- Heavy Duty Center Post has grease zerks for smooth operation in all types of weather.

Dimensions
Diameter: 20'
Crowd Gate: 10' L, 5'5" H
Panels: 6'6" H

Weight
1,534 lbs.

SORT GATE



The HiQual Sort Gate allows you to direct the flow of cattle down a main alley or to an alternate alley or loading chute.

Dimensions:
6' L x 7' H x 39" W

Weight:
495 lbs.

Sort Gate Features

- A gas spring holds the gate open in the desired direction and prevents the cattle from opening it.
- A chain and latch holds the gate to one side when sorting down the alternate alley.
- Rubber mounts and corrugated steel reduce noise, add considerable strength and improve cattle flow.

IN-LINE GATE



Scissor style gate provides increased alley control by preventing livestock from getting over, around or under.

Dimensions:
1' L x 4' W x 7' H

Weight:
240 lbs.

In-Line Gate Features

- The linkage assembly lifts the gates up and out of the mud so they won't freeze down or rust in the winter.
- Gas spring assist makes gate easier to operate and holds it in the open position.
- The In-Line Gate can be operated from either side and is reversible for left or right hand operation.

CROWDING ALLEY



Crowding Alley Features

- The unique HiQual design allows the Classic Crowd Alley to be configured in a left or right hand curve, or even an "S" curve with no additional components.
- The alley panels are 7' tall while the lower height sheeting provides access to the cattle in the alley. It also eliminates the need for a costly and dangerous catwalk.
- The panels are suspended above the ground so they do not bind up with mud or snow. They are also sealed with silicone to reduce noise and rusting.
- The "butterfly" hinge system allows for quick and easy one-handed width adjustment from 18" to 30".
- Overhead backstops adjust for all sizes of cattle & safely prevent cattle from backing up in the alley.
- A straight alley is also available.

Dimensions
30' Long
3' 6" Wide
7' High

Weight
1,490 lbs.

The HiQual *Classic Working System* is the centerpiece of the HiQual line. HiQual's research and development staff have worked with ranchers, feedlots and veterinarians to bring the safest, most efficient and innovative products to the market.

Suggested Applications:

- All cattle & bison operations
- Arenas
- Large cow calf operations and feedlots

Free working system design and layout is available. Contact your local HiQual Dealer or TM for more information.

PRODUCT NUMBER	DESCRIPTION
SHQTUB	HiQual Crowding Tub
SHQSORT	Sort Gate
SHQINL (L/R)	InLine Gate
SHQCAC	Crowding Alley Curved
SHQCAS	Crowding Alley Straight

HYDRAULIC SQUEEZE CHUTE

REVERSIBLE



ELECTRIC POWER UNIT



This external power unit can be wired for 120V or 240V applications and is powered by a 2 hp motor.

Dimensions:
14" L x 12" W x 26" H

Weight:
115 lbs.

GAS POWER UNIT



Powered by a 6.5 hp Honda engine, this unit allows you to use your Hydraulic Chute in even the most remote location.

Dimensions:
28" L x 17" W x 17" H

Weight:
98 lbs.

The HiQual Cattleman's *Hydraulic Squeeze Chute* was designed to provide the quality, strength and features demanded by the largest feedlots, at a price the traditional rancher can afford. Features like a side exit, adjustable width, and

neck extenders, are sold as options on other brands, but with HiQual they are standard features. Even with all of these benefits, the HiQual *Hydraulic Squeeze Chute* is one of the most affordable. The increased efficiency, speed

and safety make for a quick return on investment when you upgrade from a manual squeeze to the HiQual *Hydraulic Squeeze Chute*.

PRODUCT NUMBER	DESCRIPTION
SHQHYDCH-LH	Regular Hydraulic Chute (Left)
SHQHYDCH-RH	Regular Hydraulic Chute (Right)
SHQHYDPUE	Power Unit Electric
SHQHYDPUG	Power Unit Gas Honda

Hydraulic Squeeze Chute Features

- Neck Extender is hydraulically activated and holds head securely for mousing, ear tagging, etc.
- Hydraulic Lower Squeeze can be adjusted for a safer and more effective squeeze for animals of all sizes.
- Chute comes with 25' hydraulic hoses so the power unit or tractor is kept well away from the working area.
- Lockable standard side exit.
- The hydraulic controls include a pressure relief valve for animal safety.
- Self-latching drop tubes allow safe and easy access for branding and pouring.
- Side boards fold down to allow access to a cow's udder or hooves.

Dimensions

44 1/2" W
92" L
77" H

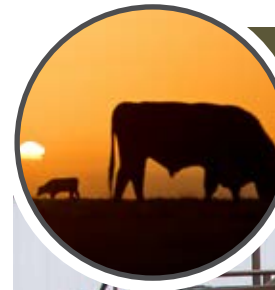
Weight

2,220 lbs. (standard)

* Side Palpation Door available, making the chute NON-reversible.

XL HYDRAULIC SQUEEZE CHUTE

WITH 2 PALP DOORS



XL Hydraulic Squeeze Chute Features

- Built-in Palpation Door allows operator to safely enter chute behind animal.
- Width adjusted hydraulically for safer and more effective squeeze.
- Neck Extender is hydraulically activated and holds head securely
- Chute comes with 25' hydraulic hoses so the power unit or tractor is kept well away from the working area (power unit extra).
- Hydraulic cylinder located in center of squeeze gate.
- Drop door frame made of 1.5" sq. 16 gauge tubing.
- Lockable standard side exit.
- The hydraulic controls include a pressure relief valve for animal safety.
- Self-latching drop tubes allow safe and easy access for branding and pouring.
- Side boards fold down to allow safe access to a cow's udder or hooves.
- Veterinary bag hangers on lever side.

Dimensions

44 1/2" W (at base) x
112 1/2" L (at base) x
77.5" H

Weight

2,680 lbs.

Designed to provide quality, strength and features demanded by the largest feedlots at a price the traditional rancher can afford! HiQual's *XL (extra long) Hydraulic Chute* was designed for veterinarians, cow/calf producers and feedlot operators who need easy access to the rear of the animal. The XL Chute has all the features of the regular chute but is 20.5" longer and comes with a built-in palpation door on the operator's side.

ALLEY EXTENSION (OPTIONAL)

The bolt-on *Alley Extension* was designed to fill the small gap between the Hydraulic Chute and a Crowd Alley when being positioned with the Transport Kit. It consists of two short side doors with chain latches and a fold out floor. The floor provides a solid and even surface for the animal to enter the chute.

HYDRAULIC TRANSPORT KIT

A wider stance and a 6,000 lb. torsion axle helps it tow easily with virtually no sway. To load the chute, you simply back up the transport deck in its tipped position. As you reverse, the chute rolls up onto the deck. Once over center, the deck returns to its flat position and the chute is winched forward for the last foot or so. Straps are provided to secure the chute to the transport. The transport works with both the **regular and XL hydraulic chutes**. This simple system allows the chute to be loaded or unloaded in just a few short minutes.

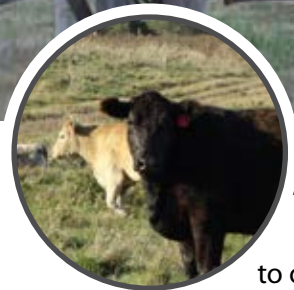


PRODUCT NUMBER	DESCRIPTION
SHQXLHYD-LH	XL Hydraulic Chute w/ Palp Left
SHQXLHYD-RH	XL Hydraulic Chute w/ Palp Right
SHQALLEXT	Alley Extension Kit
SHQHYDTRKXL	Hydraulic Transport Kit



GENERAL DUTY GATE

Designed for medium to light confinement, the *General Duty Gate* is comparable in strength to other more expensive 2" gates. Standard features include 3/4"x 12" hinges, a 32" chain, High-Tensile, 58,000 psi steel tubing and notched vertical braces. To keep the product balanced in strength, the thickness of the end posts are 14 gauge. Regardless of the application, the quality and price make this gate a bargain!



HEAVY DUTY GATE

Ideal for almost any application, the *Heavy Duty Gate* line is HiQual's most popular gate. With 2", 16 gauge steel rated at 58,000 psi, the Heavy Duty Gate is truly the strongest gate on the market. The strength is further enhanced with a 1" x 14 3/4" adjustable threaded rod hinge which will even reach through a railroad tie. Since a gate is only as strong as its latch, a 1/4" x 48" chain is standard.



**BEST
SELLER**

Lengths Available:
4'; 6'; 8'; 10'; 12'; 14';
16'; 18 & 20

Materials:
1 1/2" x 16 gauge posts
1 1/2" x 16 gauge rails
58,000 psi tubular steel

Hinges:
3/4" x 12" threaded rod

Chain:
3/16" x 32" plated
proof coil

Paint:
Baked-on brown
powder coat finish

Height/Rail Spacing:
5 rails, 48" tall
9 5/8" spacing



Lengths Available:
4'; 6'; 8'; 10'; 12'; 14';
16'; 18' and 20'

Materials:
2" x 16 gauge
58,000 psi tubular steel

Hinges:
1" x 14 3/4" threaded rod

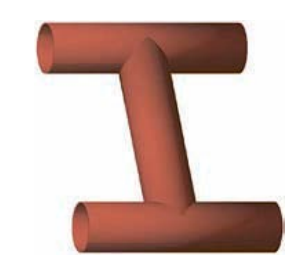
Chain:
1/4" x 48" zinc plated
proof coil

Paint:
Baked-on brown
powder coat finish

Height/Rail Spacing:
5 rails, 48" tall
9 3/8" spacing

ALL HI-QUAL GATES INCLUDE:

All HiQual Gates come standard with Notched Vertical Bracing and the Posi-Lock Chain Locks.



Notched Vertical Bracing



Posi-Lock Chain Lock

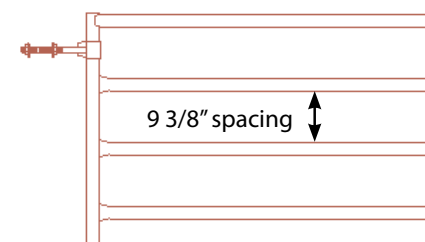
Features:

- Square corners
- Economical, but durable, 16 gauge rails for light confinement
- Strong 14 gauge end posts
- Secure latching chain
- 1 year warranty

Suggested Applications:

- Horses in light confinement
- Riding arenas
- Driveways
- Pastures
- Deer, sheep, goats and other exotics

PRODUCT NUMBER	DESCRIPTION
SHQGTGD04	4' General Duty Gate
SHQGTGD06	6' General Duty Gate
SHQGTGD08	8' General Duty Gate
SHQGTGD10	10' General Duty Gate
SHQGTGD12	12' General Duty Gate
SHQGTGD14	14' General Duty Gate
SHQGTGD16	16' General Duty Gate
SHQGTGD18	18' General Duty Gate
SHQGTGD20	20' General Duty Gate



Length refers to size of opening. The length of the gate is actually 5 1/2" shorter. i.e.: 10' gate is actually 9' 6 1/2"

PRODUCT NUMBER	DESCRIPTION
SHQGTHD04	4' Heavy Duty Gate
SHQGTHD06	6' Heavy Duty Gate
SHQGTHD08	8' Heavy Duty Gate
SHQGTHD10	10' Heavy Duty Gate
SHQGTHD12	12' Heavy Duty Gate
SHQGTHD14	14' Heavy Duty Gate
SHQGTHD16	16' Heavy Duty Gate
SHQGTHD18	18' Heavy Duty Gate
SHQGTHD20	20' Heavy Duty Gate



Heavy Duty Hinge

Features:

- Square corners
- Strong 16 gauge tube ideal for heavy duty confinement
- Long 48" chain with security latch
- Optimum strength with notched vertical bracing
- Balanced gate without weak spots
- 1 year warranty

Suggested Applications:

- Most popular heavy duty gate
- Confinement of cows, calves and yearlings
- Pastures
- Driveways
- Stallions and mares



SUPER SIX/CATTLEMAN'S GATES

SUPER SIX GATE



Super Six Gate

Lengths Available:

10' (128#) 12' (148#)
14' (169#) 16' (189#)

Materials:

2" x 14 gauge
High-Tensile, 58,000 psi
tubular steel

Hinges:

1" x 14 3/4" threaded
L-Bolt

Chain:

1/4" x 48" zinc plated
proof coil

Height/Rail Spacing:

6 rails, 59" tall
9 3/8" spacing

The ultimate in heavy confinement, the *HiQual Super Six Gate* is unequalled in the industry for strength,

durability and toughness. The *Super Six Series* has 6 rails of 2", 14 gauge material making it ideal for bull pens and heavy confinement. At 59", there are few gates as tall, and none as strong or feature packed. Extra heavy hinges, chain and latch make the *Super Six Gate* completely balanced to stand up to the most rigorous environment.

PRODUCT NUMBER	DESCRIPTION
SHQGTSS08	8' Super Six Gate
SHQGTSS10	10' Super Six Gate
SHQGTSS12	12' Super Six Gate
SHQGTSS14	14' Super Six Gate
SHQGTSS16	16' Super Six Gate

Suggested Applications:

- Rodeo arenas
- Bison, elk, stallion or bull pens
- Crowding areas
- Heavy confinement
- Feedlot & saleyard

Features:

- Versatile & long lasting hinges
- Height offers security from gate leapers
- Optimum strength with notched vertical bracing
- Ideal for heavy confinement
- Long 48" chain with security latch

CATTLEMAN'S GATE



Cattleman's Gate

Lengths Available:

8' (86#) 10' (114#)
12' (121#) 14' (139#)
16' (157#)

Materials:

2" x 16 gauge
58,000 psi tubular steel

Hinges:

1" x 14 3/4" threaded rod

Latch: (optional)

Self Latching Plunger

Chain:

1/4" x 48" zinc plated
proof coil

Paint:

Baked-on powder coat

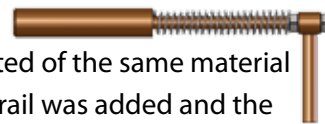
Height/Rail Spacing:

6 rails, 52" tall.

9 3/8" spacing between
the top 2 rails & 7"
spacing between the
bottom 3 rails

The *Cattleman's Gate* combines features from each of HiQual's lines to provide the best of all worlds for feedlots, working corrals and exotic livestock. While constructed of the same material as the *Heavy Duty Gate*, a sixth rail was added and the spacing reduced between the lower rails.

PRODUCT NUMBER	DESCRIPTION
SHQGTSM08	8' Cattleman's Gate
SHQGTSM10	10' Cattleman's Gate
SHQGTSM12	12' Cattleman's Gate
SHQGTSM14	14' Cattleman's Gate
SHQGTSM16	16' Cattleman's Gate
S202681BRN	Plunger Latch (shown below)



Suggested Applications:

- Sale barns
- Calving barns
- Bull pens
- Heavy confinement
- Feed lots

Features:

- Narrower rail spacing
- Plunger latch for quick & easy operation (optional)
- Extra heavy hinges for years of heavy use
- Chains & latches for extra security
- 4" taller than Heavy Duty gate



COMBO GATE/GATE ACCESSORIES

COMBO GATE



Combo Gate

Lengths Available:

4'; 6'; 8'; 10'; 12'; 14'
& 16'

Materials:

1 1/2" x 16 ga. x 58,000
psi, 2"W x 4"H,
6 gauge mesh

Hinges:

3/4" x 12" threaded rod

Chain:

3/16" x 32" plated proof
coil

Paint:

Baked-on brown
powder coat finish

Height/Rail Spacing:

3 rails, 48" tall
9 5/8" spacing at top

This gate is the ideal choice that works for everything including young calves, goats, sheep, dogs and llamas. This gate begins with the same basic frame as the *General Duty Gate*, but has the benefit of a 2" wide x 4" tall mesh panel which is welded flush within the frame for safety. The 2" x 4" vertical openings in the mesh are narrow enough to prevent your livestock from climbing up the gate.

PRODUCT NUMBER	DESCRIPTION
SHQGTCB04	4' Combo Gate
SHQGTCB06	6' Combo Gate
SHQGTCB08	8' Combo Gate
SHQGTCB10	10' Combo Gate
SHQGTCB12	12' Combo Gate
SHQGTCB14	14' Combo Gate
SHQGTCB16	16' Combo Gate

Suggested Applications:

- Light confinement
- Driveways

Features:

- Economical 16 gauge posts and rails for light confinement.
- Wire mesh panel inset and welded flush within frame for safety.
- Narrow mesh vertical openings to prevent injury.
- Strong 1 x 14 3/4" adjustable bolt hinges are economical and long lasting.

GATE HINGES



1" Heavy Duty Hinge
Heavy Duty & Cattleman's Gates



3/4" General Duty Hinge
Combo & General Duty Gates

GATE LATCHES

HiQual Gate Latches mount directly to the post.

This leaves the end of the gate smooth and reduces the chance of you or your livestock getting "hung up" on the latch. *HiQual Gate Latches* can be operated from the ground or on horseback. Simply press down on the rod and the gate can be pushed open. Once through, simply swing the gate and it will latch itself shut. To prevent an ambitious horse from opening the gate, you can lift up on the rod and give it a half turn to lock it in place. Both latches will work with any gate up to 2" in diameter.



Fixed Latch

Mounts to the post with four lag bolts.



Adjustable Latch

Uses two 3/4" threaded rods for plenty of adjustment.

Dimensions

Length: 4"
Width: 4"
Height: 23"

Shipping Weight

6.9 lbs.

Mounts

4 bolts (not included)

Dimensions

Length: 18"
Width: 4"
Height: 23"

Shipping Weight

10.7 lbs.

Mounts

2 hinges (included)



CONTINUOUS FENCE

HiQual *Continuous Fence* combines top notch quality, simple installation and a visually appealing finish at a very cost effective price. Whether you're building corrals and pens, putting in an arena or just want an attractive yard fence, HiQual has a perfect configuration.

The key to the *Continuous Fence System* is the innovative connection. Each 10' or 20' panel has one end which is "swaged" down, allowing it to slip into the next panel for a smooth yet solid joint. The HiQual notched vertical bracing system is used for added support between your posts. For durability and appearance, each panel is finished with a high quality, baked on powder coat paint.

Premium quality, safety, appearance and ease of installation are reasons why HiQual's *Continuous Fence* packages are in such great demand throughout North America.

TESTIMONIAL: "The HiQual continuous fencing is easy to install and offers the producer an attractive, no maintenance fencing system. We install it because of the safety it offers to both the livestock and handlers. It provides a highly visible and physically strong barrier to discourage animals from challenging the fence."
Peter Dopheide, Under the Sun Enterprises

How Does HiQual Continuous Fence Stack Up Against the Competition?

Features	Continuous Fence	Sucker Rod	Wood Fence	Vinyl Fence
Easily Installed	•			
Weather Proof	•			
Long Life	•	•		
Smooth Corners	•			
Powder Coat Paint	•			
Easily Uninstalled	•			•
1 Year Warranty	•			•

PRODUCT NUMBER	2" CONTINUOUS FENCE - 2" X 16 GA RAILS
SHQFC2510	2" 5 Rail Continuous Fence 10'
SHQFC2520	2" 5 Rail Continuous Fence 20'
SHQFC2610	2" 6 Rail Continuous Fence 10'
SHQFC2620	2" 6 Rail Continuous Fence 20'
SHQFCONB1	2" Continuous Fence 45° Elbow
SHQFCONB2	2" Continuous Fence 90° Elbow
SHQFCOMP2	2" 5 Rail Continuous Fence Swaged End Post
SHQFCOMP1	2" 5 Rail Continuous Fence Open End Post
SHQCF2-SW6	2" 6 Rail Continuous Fence Swaged End Post
SHQCF2-OE6	2" 6 Rail Continuous Fence Open End Post

PRODUCT NUMBER	1 1/2" CONTINUOUS FENCE - 1 1/2" X 16 GA RAILS
SHQFC1410	1 1/2" 4 Rail Continuous Fence 10'
SHQFC1420	1 1/2" 4 Rail Continuous Fence 20'
SHQFC1510	1 1/2" 5 Rail Continuous Fence 10'
SHQFC1520	1 1/2" 5 Rail Continuous Fence 20'
SHQFCONB1-1.5	1 1/2" Continuous Fence 45° Elbow
SHQFCONB2-1.5	1 1/2" Continuous Fence 90° Elbow
SHQCF1.5-4R	1 1/2" 4 Rail Continuous Fence Swaged End Post
SHQCF1.5/2-4R	1 1/2" 4 Rail Continuous Fence Open End Post
SHQFCOMP2-1.5	1 1/2" 5 Rail Continuous Fence Swaged End Post
SHQFCOMP1-1.5	1 1/2" 5 Rail Continuous Fence Open End Post

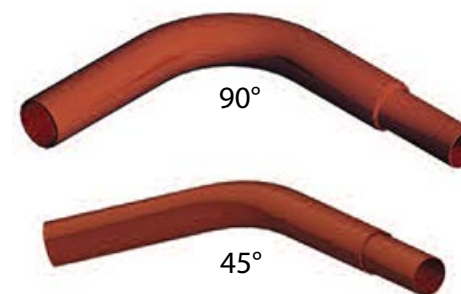
2" Continuous Fence

	5 Rail	6 Rail
Height	47.5"	59"
Weight (20ft)	146 lbs.	175 lbs.
Weight (10ft)	77 lbs.	93 lbs.

1 1/2" Continuous Fence

	4 Rail	5 Rail
Height	36"	47.5"
Weight (20ft)	80 lbs.	100 lbs.
Weight (10ft)	46 lbs.	58 lbs.

Constructed of 16 gauge hi-tensile tubular steel rated at 58,000 psi and is available with 2" or 1 1/2" rails.
Braces: 1 1/2" x 16 gauge round, notched, & welded. **Connection:** Swaged end inserts into open end of next panel.



Features:

- Very versatile, even on uneven ground.
- Easy installation with clips and lag bolts to posts and prefabricated panels.
- The unique connecting system allows the panels to move as the ground expands and contracts when the weather changes, without causing damage or requiring costly repairs.
- More durable than lumber or vinyl.
- Steel construction allows the fence to be low maintenance & resist weather.
- Round tubing is safe with no sharp edge. Corners are rounded.
- Mounts at any height to suit a wide variety of applications.
- Maintains re-sale value, and is easily uninstalled.

Elbows

Continuous Fence Elbows are available in a 90 or 45 degree configurations and a flex elbow for uneven surfaces or hills.

All elbows are available in 2" or 1 1/2".

End Post

End Posts are used to terminate a straight run of fencing and eliminate any sharp or open edges which could cause injury to people or livestock. Available in 1 1/2" or 2" with swaged or open ends.

Suggested Applications:

- Perimeter fencing
- Rodeo/roping/riding arenas
- Pastures
- Corrals
- Yard fencing



HEAVY DUTY PANELS

TESTIMONIAL: "Our contractor commented several times at the strength and ease of installation. Superior to any panels they have ever used." **Ginger Head, Horseshoe Bend, ID**

HiQual Heavy Duty Panels have set the standard for portable confinement. Available in 5' or 6' tall models, the *Heavy Duty Panel* line is ideal for everything from calving barns and working pens to feedlots and rodeo arenas.

The strength in HiQual panels begins with the raw material. High-Tensile, 58,000 psi steel is custom rolled to HiQual's own exacting standards. HiQual panels outperform the competition in strength and longevity.

The outstanding performance of *HiQual Heavy Duty Panels* is further enhanced by the notched vertical bracing system. A 1 1/2", 16 gauge tube is notched out at both ends and welded between each rail of the panel. This center bracing system acts as another end post in the middle of the panel. Strength is provided by the tubing itself and not just by a weld. Sharp edges are also eliminated making it safer for your livestock.

60" 5 Rail Lengths & Weights

8' - 81 lbs
10' - 95 lbs
12' - 108 lbs
14' - 125 lbs
16' - 138 lbs
10' with 4' gate - 155 lbs
12' with 4' gate - 175 lbs

72" 6 Rail Lengths & Weights

10' - 110 lbs
12' - 125 lbs
14' - 148 lbs
16' - 161 lbs

Materials

2" dia. x 14 gauge posts (11 ga. on frame gates)
2" dia. x 16 gauge rails

Features:

- Easy to move on 12" leg supports. Mud legs for extra support and extended life.
- Positive locking pin and clip connector system accommodate three way connections with no additional hardware.
- Adapters are available for all types of configurations including wall mounts and 4 way connections.

Suggested Applications:

- Calving barns
- Confinement
- Rodeos
- Bulls, bison, draft horses

PRODUCT NUMBER	HEAVY DUTY 6 RAIL PANELS
SHQPNHD08-6R	8' Heavy Duty Panel
SHQPNHD10-6	10' Heavy Duty Panel
SHQPNHD12-6	12' Heavy Duty Panel
SHQPNHD14-6	14' Heavy Duty Panel
SHQPNHD16-6	16' Heavy Duty Panel

PRODUCT NUMBER	HEAVY DUTY 5 RAIL PANELS
SHQPNHD08	8' Heavy Duty Panel
SHQPNHD10	10' Heavy Duty Panel
SHQPNHD12	12' Heavy Duty Panel
SHQPNHD14	14' Heavy Duty Panel
SHQPNHD16	16' Heavy Duty Panel



HEAVY DUTY FRAME GATES

TESTIMONIAL: "We picked HiQual Panels and Frame Gates for their durability. Our new calving barn was a long term investment and we wanted panels and gates that would stand up for years of use by our Simmental cows." **Bruce Robinson, Hamiota, MB**

HiQual's Heavy Duty Frame Gates provide an extremely durable and portable gate to complement the Heavy Duty Panel line. These gates are engineered to withstand heavy crowding situations and are ideal for working pens and temporary confinement. Each gate features a spring loaded, self catching plunger latch as well as extra heavy construction and bracing. For ride through applications, extender kits are available to give you a 10' clearance.

Features:

- Square corners for safety.
- Notched vertical braces for added strength.
- Balanced for strength, no weak spots.
- Spring loaded, plunger latch for ease of use.

Suggested Applications:

- Crowding pens and alleys
- Feedlots
- Rodeos
- Riding arenas

PRODUCT NUMBER	HEAVY DUTY 5 RAIL FRAME GATES
SHQGTFR04	4' Heavy Duty Frame Gate
SHQGTFR05	5' Heavy Duty Frame Gate
SHQGTFR08	8' Heavy Duty Frame Gate
SHQGTFR10	10' Heavy Duty Frame Gate
SHQGTFR12	12' Heavy Duty Frame Gate

PRODUCT NUMBER	HEAVY DUTY 6 RAIL FRAME GATES
SHQGTFR10-6R	10' Heavy Duty Frame Gate
SHQGTFR12-6R	12' Heavy Duty Frame Gate

Height: 92"	6 Rail Lengths & Weights 10' frame gate - 240 lbs 12' frame gate - 274 lbs
5 Rail Lengths & Weights 4' frame gate - 91 lbs 5' frame gate - 104 lbs 8' frame gate - 199 lbs 10' frame gate - 228 lbs 12' frame gate - 259 lbs	Materials 2" dia. x 14 gauge posts (11 ga. on frame gates) 1 1/2" dia. x 16 gauge braces





RANGE PANELS

The *Range Panel Series* offers a lower cost product without sacrificing quality. These all-purpose panels are ideal for temporary stalls, perimeter fencing and roping arenas, and are made from the same material as the Flex Panel line. The spacing between the lower three rails has been reduced to a narrow 7 1/2", making them very effective for smaller stock such as sheep, goats, and calves.

Materials:

- 1 1/8" x 1 3/4" x 16 gauge oval tube
- 1" x 16 gauge notched vertical braces
- High-tensile tubular steel

Rail Spacing:

- Top 2 spaces - 10"
- Bottom 3 spaces - 7 1/2"



The U-Latch connects quickly and easily with very little gap between panels, even on uneven ground.

PRODUCT NUMBER	DESCRIPTION	WEIGHT
SHQRPN10	10' Range Panel	78 lbs
SHQRPN12	12' Range Panel	90 lbs
SHQRPN12	16' Range Panel	116 lbs

PRODUCT NUMBER	DESCRIPTION	WEIGHT
SHQRPN10-G4	10' Range Panel w/ 4' Gate	104 lbs
SHQRPN12-G4	12' Range Panel w/ 4' Gate	118 lbs
SHQRFG04	4' Range Frame Gate	61 lbs



Features:

- Secure, versatile connector is flexible on uneven ground
- Improved cattle flow with narrow bottom rail spacing
- Mud legs for added support & extended life
- Notched vertical bracing for overall strength
- Square corners prevent animals' leg from slipping between panels

Suggested Applications:

- Cattle and horses in light confinement
- Temporary stalls
- Perimeter fencing
- Roping arenas
- Round pens



6 RAIL FLEX PANELS

The *Flex Panel* gets its name from the patented *Flex Connector System* designed and developed exclusively for HiQual Manufacturing. Safety is the most important factor when considering a premium working panel and there is no safer product available than the HiQual *Flex Panel*. For heavy confinement areas an additional set of connectors may be added to the panel, effectively doubling it's strength.

Lengths & Weights

- 10' - 78 lbs
- 12' - 92 lbs.
- 6'x10' frame gate - 82 lbs.
- 6'x10' PG4 - 119 lbs.
- 6'x12' PG4 - 119 lbs.

Materials:

- 1 1/8" x 1 3/4" x 16 gauge oval
- 1" x 16 gauge notched vertical braces
- 58,000 psi hi-tensile tubular steel

Height/Rail Spacing:

- 6 rail, 72" tall
- 9 3/4" spacing between rails

Paint:

- Baked-on powder coat

Connectors:

- Patented Flex connectors

Features:

- Rubber connector reduces noise and absorbs impact
- Versatile and quick attachment to other panels and on uneven ground
- Lightweight, easily portable
- Longer life connectors with UV Inhibitors
- Easy to move on 12" leg supports
- Up to 4 connectors per post
- Less than 1" gap between panels

Suggested Applications:

- Horses in light confinement
- Round pens
- Portable pasture panels



Flex Connector

The Flex Connectors act as built-in shock absorbers and will stretch and spring back upon impact. Constructed of patented hi-density molecular rubber, they have built in U.V. inhibitors and work evenly under all types of weather conditions.

PRODUCT NUMBER	DESCRIPTION
SHQPNFX10-6	10' 6 Rail Flex Panel
SHQPNFX12-6	12' 6 Rail Flex Panel
SHQPNFXPG10-6	10' 6 Rail PGF Panel
SHQPNFXPG12-6	12' 6 Rail PGF Panel



ROUND PENS



TESTIMONIAL: "I've been working with horses all over the world for years, and when I show up for a clinic and see a HiQual Round Pen, I couldn't be happier. It's the safest portable round pen money can buy!" **Buck Brannaman, Renowned Clinician and Technical Adviser for "The Horse Whisperer"**

Training horses takes a major investment both in time and facilities. It is critical that your animal be safe, comfortable and secure in its surroundings in order for the training experience to be most effective. HiQual **Round Pens** were designed to provide both the horse and trainer the safest possible environment.

While a round pen can be constructed out of almost any panel or fencing material, HiQual is confident that you will see the benefits of investing in a round pen constructed with **Flex Panels**.

The 6' tall panels present an imposing barrier to your horse and reduce the chance that your horse will challenge the panels. If your horse did manage to get on top of a panel, the square corners, tightly fitted **Flex Connectors**, and rubber capped posts dramatically reduce the chance of injury and costly vet bills.

Features:

- Patented Flex Connector System
- Connectors flex and absorb shock on impact
- User friendly, durable polymer rubber with UV inhibitors
- Less than 1" gap between panels for safety
- Connect to any panel up to 2" in diameter
- Ideal for uneven ground
- Square corners on panels for safety
- Ride through Frame gate for safety and convenience
- 6' tall panels present an imposing barrier and prevent jumping

Round Pen Packages

40' Round Pen	12 - 10' x 6' tall, 6 rail Flex Panels 1 - 6' x 10' tall Flex Frame Gate 26 Flex Straps
60' Round Pen	15 - 12' x 6 rail Flex Panels 1 - 6' x 10' tall Flex Frame Gate 32 Flex Straps

PRODUCT NUMBER	DESCRIPTION
SHQRNDPEN40	Round Pen 40'
SHQRNDPEN60	Round Pen 60'



HEAVY DUTY FEED THRU PANELS

Stout is a word often used to describe HiQual Feed Thru Panels. With a 2", 14 gauge frame, there are few products which can compare for strength and toughness. The 10' and 12' panels even have 2" x .125 wall round tube rail in the middle for added support. **Heavy Duty Feed Thru Panels** can be configured as stand alone feeders or as part of a fence line. The balanced design and extra heavy construction stands up well to the heavy pressure.



Suggested Applications:

- Weaned calves
- Dairy heifers
- Young Horses
- Dairy free stall barn
- Feedlot
- Large square bales

Features:

- Multiple uses for feeding hay in-line or from a stack or large square bales
- Improved animal comfort during feeding
- Feed savings
- Easy to assemble and connects to HiQual Heavy Duty Panels

Feed Thru Panels

Panel Lengths	6'	8'	10'	12'
# of Feeding Stations	3	5	7	9
Size of Feeding Stations	15 13/16" wide	13 5/8" wide	12 11/16" wide	12 3/16" wide
Weight	83 lbs	106 lbs.	146 lbs.	174 lbs.
Height	60"	60"	60"	60"

PRODUCT NUMBER	DESCRIPTION
SHQPNFT06	6' Feed Through Panel
SHQPNFT08	8' Feed Through Panel
SHQPNFT10	10' Feed Through Panel
SHQPNFT12	12' Feed Through Panel

Material:

2" x 14 ga. frame • 16 1/2" x 16 ga. sheeting
1 1/2" x 16 ga. slant bars • 58,000 psi steel



Feed Thru Panels will even connect to HiQual **Heavy Duty Panels** with the HiQual Pin and Clip Connector System.



TOMBSTONE SAVER FEEDER



TESTIMONIAL: "Because of this feeder's weight, my stock can't push it around, and with the sloped tombstones, there is little or no waste. This feeder should pay for itself in one season."
Nevin Doud ,Kipling, SK

The *Tombstone Saver Feeding System* is recognized by ranchers across North America as the cutting edge in feeding technology. The unique Tombstone Hoop design was motivated by years of customer feedback saying that traditional feeders wasted too much feed and didn't stand up to the abuse of hungry animals.

The patented sloped design of the Tombstone Saver Hoops create a 12" void between the bale and the feeder skirt. As animals feed, the loose hay falls inside of the feeder instead of on the ground where it is wasted. Over the course of a season, this can add up to thousands of dollars. The other added benefit is that the animal can't get any leverage when pressuring the feeder. By reducing this stress, you now have a product which will last up to five times longer than slant bar feeders. Pound per pound, there is no better value.

Feeding Stations: 15

Diameter: Top - 7' 2"
 Bottom - 9' 2"

Weight: 368 lbs.

Suggested Applications:

- Cow/calf operations
- Horses
- Dairy cattle
- Horned cattle

Features:

- Documented feed savings of 60 lbs. per 1,000 lbs fed
- Sloped-in hoops keep cattle from pressuring feeder and causing damage
- Open top eliminates neck rub and hair loss
- Accommodates large bales up to 6' in diameter
- 15 feeding stations mean each feeder will accommodate up to 25 head
- Mud legs keep feeder up off the ground to prevent rusting
- Optional hinge kit allows the feeder to open up and swing out for easy filling



PRODUCT NUMBER	DESCRIPTION
SHQTSFDR	Tombstone Saver Feeder
SHQTSSVNT	Tombstone Saver Neck Tube



TOMBSTONE BULL FEEDER



TESTIMONIAL: "I needed a feeder that my bulls couldn't bust up. The HiQual bull feeder is strong, my bulls don't hurt this one."
Ervin Sock & Sons, Hay Lakes, AB

Replacing bale feeders has long been considered an annual expense, especially when feeding bulls or buffalo. Today, there is an option which not only stands up to these fractious animals, but reduces feed costs as well.

The HiQual Bull Feeder features the same basic design as the Tombstone Saver, but is built larger and heavier for bulls. The stronger hoops and wider spacing easily accommodate a bulls neck with out rubbing. The sloped hoop design is the main reason why you don't see HiQual Bull Feeders in the junk pile with all of the other feeders each season.

The sloped hoop design prevents the bulls from pressuring the feeder, even when you get several aggressive animals trying to feed at the same time. The Bull Feeder is so versatile and strong that it is one of the few feeders that is warranted for use with buffalo.

Feeding Stations: 12

Diameter: Top - 7' 6"
 Bottom - 9' 8"

Weight: 427 lbs.

Suggested Applications:

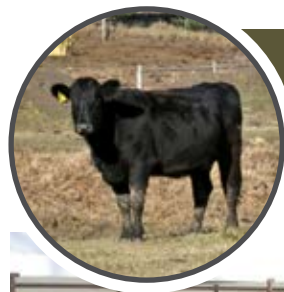
- Bulls and cattle over 1500 lbs
- Buffalo
- Draft horses
- Elk
- Horned cattle

Features:

- Wider spacing between hoops
- Increased strength
- Accommodates up to 20 head
- Sloped-in hoops keep animals from pressuring the feeder and causing damage
- Open top eliminates neck rub and hair loss
- Patented design reduces feed waste
- Replacement hoops available
- Optional hinge kit available
- Mud legs to keep the feeder off the ground



PRODUCT NUMBER	DESCRIPTION
SHQTSBULLFDR	Tombstone Bull Feeders
SHQTSHING	Tombstone Saver Hinges



GRAIN BUNKS/SILAGE BUNKS

GRAIN BUNK



Grain Bunks

Dimensions/Weights:

11 1/2' Long x 30" Wide x 22" High x 9" Deep
18 cubic feet or 14 bushels
152 lbs.

Materials:

16 gauge, corrugated sheet metal,
hemmed & continuous

Bottom:

V-Bottom with Drain Holes

Like all HiQual products, the *Grain Bunks* are built

PRODUCT NUMBER	DESCRIPTION
SHQDFBUNK	Bunk Feeder

for maximum durability. In another industry first, HiQual's all steel bunks use corrugated side panels to dramatically increase strength and longevity. With many round bottom bunks, smaller calves climb inside and are unable to get out. HiQual's v-bottom is easy to clean and allows the calf to stand up and get out. Drain holes at each end and skid legs are also standard features.

Suggested Applications:

- Feeder for all types and sizes of animals

Features:

- Strong Heavy Duty all steel construction with corrugated sides.
- V bottom with drain holes ensures total feed consumption & easy clean-up.
- Optional connector keeps bunks in line.

GRAIN & SILAGE BUNKS



Silage Bunks

Dimensions/Weights:

11 1/2' Long x 30" Wide x 22" High x 15" Deep
32 cubic ft or 26 bushels
188 lbs.

Materials:

16 gauge, corrugated sheet metal,
hemmed & continuous

Bottom:

V-Bottom with Drain Holes

The HiQual *Silage Bunk*

has the same rugged construction as the HiQual *Grain Bunk* but the capacity is increased from 18 cubic feet to 32 cubic feet. They are constructed from a single sheet of metal with corrugated sides for extra strength. You won't be replacing poly liners each year with HiQual Bunks. The skid legs keep the bunks off the ground so they don't freeze down in winter and are easier to move.

Suggested Applications:

- Feeder for all types and sizes of animals

Features:

- Strong Heavy Duty all steel construction with corrugated sides.
- V bottom with drain holes ensures total feed consumption & easy clean-up.
- Optional connector keeps bunks in line.



CLASSIC CALVING PEN

The HiQual *Classic Calving Pen* provides a safe environment for the animal and operator throughout the calving process. Many patented features like the double acting gate and spring loaded stanchion adjustments are on this unit to make it easy to use, safe for the livestock and operator.

Dimensions

Outside: 10'W x 12' L x 7'H
Inside: 8' x 10' adjustable to 10' x 10'

Weight:

1238 lbs.

Materials

Headgate Cable	1/4" galvanized aircraft cable
Headgate Stanchions	2 3/8" x .188 steel tubing
Entrance Panel: Frame	2 1/4" x 11 gauge round
Entrance Panel: Gate	2" x 16 gauge round
Side Panel:	2" x 14 gauge round & 1 1/2" x 16 gauge square with 105" L x 36" H sheeting
Front Panel: Door Posts & Rails:	2" x 14 gauge round
Front Panel: Posts & Rails	2" x 11 gauge round
10' Panel: Rails	2" x 16 gauge round
10' Panel: Posts	2" x 14 gauge round

PRODUCT NUMBER	DESCRIPTION
SHQCLCPVN	Calving Pen
SHQCLPNFLR	Calving Pen Floor

Features:

- Improved cattle flow with narrow bottom rail spacing
- Secure, versatile connector is flexible on uneven ground
- Mud legs for added support & extended life
- Notched vertical bracing for overall strength
- Square corners prevent animals' leg from slipping between panels

Suggested Applications:

- Cow/calf operations
- Show cattle being trained to lead
- Show cattle fitting



When calving pen cannot be secured to floor or walls, the calving pen floor will prevent cattle from moving the pen.

Dimensions:

1 1/2" H x 36" square

Weight:

81 lbs.

Calving Pen Floor

- 2 Steel traction bars
- Materials
 - Side Tubes: 1 1/2" x 16 gauge square
 - Sheeting: 10 gauge
 - Traction Bars: 1" x 14 gauge square
- Optional feature



HYDRAULIC CALF CHUTE



TESTIMONIAL: "I'm 64 years old and the 5th generation in the cattle business. In my life we have branded and marked calves several ways. The HiQual Hydralic is the most efficient, quickest way to make it the easiest on the calves. It's also the most energy efficient way for your work crew to work which puts money in our pockets." **Mike Barley, Barley's Flying B Ranch**

Features:

- Scissor style tailgate is easy to operate and provides much better control than traditional guillotine gates
- Neck extender holds tension with gas filled struts.
- Complete chute tilts with hydraulics to 78 degrees, allowing some gravity to be used for weight to be at the bottom of the chute
- 25' of hydraulic hose for use with any type of power pack
- Hydraulic controls fold away for ease of transport and storage
- Table side has 4 fold down doors for access to calf when in chute position
- Working side of the chute has spring loaded bars for ease of access to the calf
- Left and right options available
- Optional trailer kit

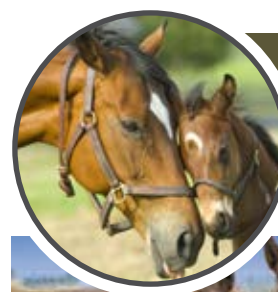
The latest HiQual innovation! The *Hydraulic Calf Chute* also works as a tipping table to work calves. Hydraulic Squeeze and Headgate along with spring loaded drop-down fold-away bars to access calf when in tipping position. Drop-down doors for access to calf when in regular stand-up chute position. Hydraulically operated scissor-style tailgate to prevent calf from entering when in alley.



Exterior Dimensions: 7'2"L x 4'7"W x 5'11"H 6'5"W w/hyd controls out	Weight: 1342 lbs.
Squeeze Width: - At floor: 10" wide - At Top Bar: 1" Min. – 25" max	Paint: Baked-on brown powder coat finish
	Warranty: 1 year warranty

PRODUCT NUMBER	DESCRIPTION
SHQHYCFCHT-LH	Hydraulic Calf Chute- Left
SHQHYCFCHT-RH	Hydraulic Calf Chute- Right

GROUND FEEDER/FENCE LINE FEEDER



GROUND FEEDER



Ground Feeder

Dimensions: Outside width: 5', Inside width: 46"	Materials: Rotational molded virgin polymer with UV inhibitors
Weight: 70 lbs.	Warranty: 2 years

As with all HiQual products, a key factor

PRODUCT NUMBER	DESCRIPTION
SHQGRDFDR	Ground Feeder

in the design of the *HiQual Ground Feeder* was safety. The feeder is constructed of rotational molded, heavy wall, virgin poly. Not only does this process provide incredible strength and durability, but it eliminates any sharp edges. As feed is one of the most costly aspects of horse ownership, the *Ground Feeder* was designed with feed savings in mind. The bell shaped bottom provides protection from the wind and the 45 degree lip catches any loose hay and returns it to the center of the feeder.

Suggested Applications:

- Feeding hay to horses and exotic livestock

Features:

- Easily transported by tipping and rolling
- Belled bottom helps stop "spooning"
- High capacity feeding of small square bales
- Solid bottom prevents sand colic
- Can cut your own drainage holes

FENCE LINE FEEDER



Fence Line Feeder

Dimensions: 24" wide x 20" deep x 41" high	Materials: Heavy steel grill
Weight: 43 lbs.	Warranty: 2 years

The key features of the *Fence Line Feeder*

PRODUCT NUMBER	DESCRIPTION
SHQFNCFDR	Fence Line Feeder

include reduced feed waste, easy installation, durability, efficiency and above all, safety. Feed waste is reduced by the square grill design, and rain proof lid. The lid opens from the back side of the feeder, allowing you to safely fill it from outside the corral. The rotational molded poly construction is also a safety consideration as it eliminates sharp edges, and will stand up to the toughest abuse. The *Fence Line Feeder* can be installed virtually anywhere including on a barn wall, and HiQual panels or even on a wood plank fence.

Suggested Applications:

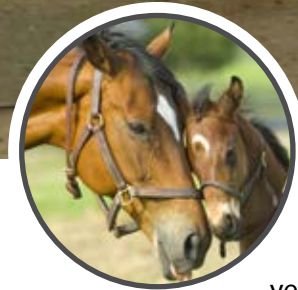
- Feeding hay to horses and exotic livestock
- Vet clinics and research stations

Features:

- Mounts to tubing or lumber up to 2" diameter
- Can be mounted at various heights
- Top opening lid for protection from rain
- Smooth corners, no sharp edges
- Third hook on bottom secures feeder to fence



ORIGINAL STALLS



HiQual's *Original Horse Stall Series* has been a customer favorite since its introduction over 25 years ago. These stalls combine the natural beauty of wood with the modern features and quality construction synonymous with the HiQual brand. HiQual *Original Stalls* are constructed with 2" hi-tensile, 14 gauge round tubing with an astonishing 58,000 psi rating. Like all HiQual products, the stalls are finished with an extremely high quality, baked on powder coat paint.

10' Original Stalls

	Stall Front	Vertical Rail Divider	Solid Divider
Dimensions	116.5" L X 85" H X 2" D	116.5" L X 85" H X 2" D	116.5" L X 85" H X 2" D
Weight	230 lbs.	160 lbs.	135 lbs

12' Original Stalls

	Stall Front	Vertical Rail Divider	Solid Divider
Dimensions	140.5" L X 85" H X 2" D	140.5" L X 85" H X 2" D	140.5" L X 85" H X 2" D
Weight	260 lbs.	185 lbs.	155 lbs

PRODUCT NUMBER	DESCRIPTION
SHQHS10FR	10' Original Front
SHQHS10FRND	10' Original Front No Doors
SHQHS10FRREV	10' Original Front Rev
SHQHS10SD	10' Original Solid Div
SHQHS10VD	10' Original Rail Divider

PRODUCT NUMBER	DESCRIPTION
SHQHS12FR	12' Original Front
SHQHS12FRREV	12' Original Front Reversed
SHQHS12SD	12' Original Solid Divider
SHQHS12VD	12' Original Rail Divider

Features:

- Safe, heavy duty construction
- 4' stall door on aluminum rollers with bearings is quiet, rolls easily and does not rust
- Available with door on reverse side
- Rolling door has large drop down grill
- Feed door hinges out for easy feeding
- Can be set-up as a free standing box stall
- Wood easily inserts into track vertically



Vertical Rail Divider

Solid Divider

Stall Front

Connectors sold separately. Lumber not included.

TRADITIONAL STALLS/TILT OUT FEEDERS

TRADITIONAL STALLS



The *Traditional Stall Series* is a favorite of the equine professional looking for the highest quality and features at a surprisingly affordable price. The latch on the 4' rolling door was updated to an easier to use and more ergonomic design. The framework is constructed from 2" x 2" x 16 ga. square tubing. The 1" round x 16 gauge vertical rails are cut square and welded flush to the upper and lower frames.

10' Traditional Stalls

	Stall Front	Vertical Rail Divider	Solid Divider
Dimensions	116.5" L X 85" H X 2" D	116.5" L X 85" H X 2" D	116.5" L X 85" H X 2" D
Weight	196 lbs.	155 lbs.	131 lbs

12' Traditional Stalls

	Stall Front	Vertical Rail Divider	Solid Divider
Dimensions	140.5" L X 85" H X 2" D	140.5" L X 85" H X 2" D	140.5" L X 85" H X 2" D
Weight	215 lbs.	182 lbs.	154 lbs

Features:

- 4' stall door on aluminum rollers with bearings is quiet, rolls easy and does not rust
- Drop down grill is recessed into rolling door & has grease zerks to maintain smooth operation
- Horse proof latch is mounted flush with the door
- Also available with the door on the reverse side



Traditional Stall Front comes standard with the Feed Grill Door. Tilt Out Feeder is optional.

TILT OUT FEEDERS



Tilt Out Feeders

Dimensions:
24" W x 20" D x 40" H

Weight:
50 lbs.

Material:
Rotational molded virgin polymer with UV inhibitors

Warranty:
2 years

The daily task of feeding is a chore which few people enjoy. However, the new *HiQual Tilt Out Feeder* was designed to make the feeding process much more efficient and user friendly. Have you ever felt the annoying itch of fresh hay as it works its way down the collar of your shirt? The *Tilt Out Feeder* releases from the top and tilts down and out into the alley allowing easy access, less lifting and much less itching. It can also be dropped all of the way down for easy cleaning.

Features:

- Tilts out horizontally into aisle for easy filling
- Tilts completely down for easy cleaning
- 37" above ground for natural feeding position
- Hinged lid keeps horse out while filling feeder
- Square grill design reduces waste
- Wet erase board with spring clip makes convenient message center
- Self-catching, push button, one handed latch
- Recessed, molded handle

PRODUCT NUMBER	DESCRIPTION
SHQTOFDR	Tilt Out Feeder

LIVESTOCK HANDLING EQUIPMENT

196 1/2 E. 6th Street
Sioux Falls, SD 57104
info@hiqualequipment.com
www.hiqualequipment.com



1-844-5HI-QUAL
(1-844-544-7825)



Scan this QR code with your
smart phone to visit our website.
www.hiqualequipment.com



Interested in working for HiQual?
Scan this QR Code with your smartphone to e-mail
us for our current employment opportunities.

